

THC  
26%

CBD  
<1%

HYBRID

# Bonne Nuit Bonbon

(Gelato 33 x French Cookies x Royal Cookies)



Hang dried



Machine trimmed



Hand finished



Greenhouse

Bonne Nuit Bonbon (BNB) combines the genetics of Gelato 33, French Cookies, and Royal Cookies, showcasing their superior therapeutic potential.

This cultivar produces dense, trichome-rich calyxes that not only contribute to its striking deep purple appearance but also signify a high concentration of cannabinoids and terpenes. These trichomes are linked to the strain's therapeutic efficacy, often used for pain relief, stress reduction, and insomnia management.

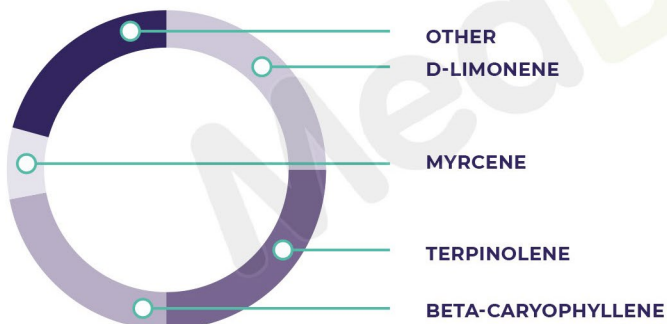
The combination of D-Limonene, Terpinolene, Beta-Caryophyllene and Myrcene terpenes gives this strain potent anti-inflammatory, anxiolytic, and sedative properties. Beta-Caryophyllene, known for its ability to interact with the endocannabinoid system, offers anti-inflammatory, analgesic, and potential antimicrobial and antioxidant properties, while the sedative, calming effects of Myrcene support relaxation and sleep. D-Limonene enhances mood and reduces stress, making it a versatile strain for managing both physical and mental ailments.

Terpinolene, while less common, contributes uplifting and calming effects and is known for its potential antioxidant and sedative qualities.

[info@caprica.je](mailto:info@caprica.je)

[www.caprica.je](http://www.caprica.je)

## PRIMARY TERPENES





## FREQUENTLY ASK QUESTIONS

### 1. Why have I been given this leaflet?

This leaflet has been provided to you because you have prescribed a medicine that is unlicensed. It answers some frequently asked questions regarding unlicensed medicines and their usage.

### 2. What are unlicensed medicines and 'Specials'?

The term 'unlicensed medicine' refers to medicines not approved for use by the relevant regulatory body (such as the MHRA in the UK) or those used outside their approved terms. In contrast, a licensed medicine holds marketing authorisation from the regulatory body, confirming it has been tested for efficacy, safety, and appropriate dosage and administration methods. In the UK, most CBMPs are classified as 'Specials,' meaning they belong to a category of unlicensed medicines made or sourced to meet the specific clinical needs of an individual patient.

### 3. Why would an unlicensed medicine be used?

There are several reasons why you may prescribe an unlicensed medicine: You may believe the product is appropriate for use, even though it may not be classified as a medicine and hasn't undergone the licensing process, as is often the case with CBMPs; You may believe the medicine will effectively treat the condition even if it's licensed for a different one; The medicine may be licensed in another country and must be imported to the UK, where it's classified as unlicensed; or the medicine may be licensed, but its form may need to be modified to meet specific needs, such as converting a tablet into another form if the patient cannot swallow it safely, making it an unlicensed 'special' medicine.

### 4. What should your patient do if they have further queries?

If they have any further questions about the medication or are concerned about taking it, please advise them to reach out to the healthcare professional who prescribed it who can offer more information or may connect them with a support group related to their condition.

### 5. How is the medicine taken?

Follow the instructions provided by the prescribing

healthcare professional closely. When the medicine is dispensed, the usage instructions will be clearly indicated on the packaging. As with any medication, if they experience any unexpected or unpleasant side effects, they should speak with the prescribing healthcare professional. For urgent medical advice that can't wait, dial NHS 111. In a serious emergency, always dial 999.

### 6. Is cannabis legal?

The use of medical cannabis was legalised in the UK in November 2018

### 7. Can I travel with cannabis medicine?

If they need to travel with their cannabis product, it's advisable to check with the embassy of their destination country to understand the legal status of cannabis there. Always carry a copy of their prescription when traveling with prescribed cannabis products.

Cultivar:	Bonne Nuit Bonbon
Parent Genetics:	Gelato 33 French Cookies Royal Cookies
Primary Terpenes:	Terpinolene Beta-Caryophyllene D-Limonene
Warnings and Precautions:	This medicine may make you feel sleepy. If this happens do not drive or use tools or machinery. Do not drink alcohol. Do not drive while taking this medicine until you know how it affects you. Do not drive if you feel sleepy, dizzy, unable to concentrate or make decisions, or if you have blurred or double vision.  This product is for medical use only. Use only as prescribed by your doctor.
Administration:	Suitable for vaporisation only.
Storage Instructions:	Store in a cool and dry place below 25°C, protected from light. Do not freeze.  Keep out of reach and sight of children.

## ADVERSE EVENTS



Adverse events should be reported. Reporting forms and information can be found at: [www.mhra.gov.uk/yellowcard](http://www.mhra.gov.uk/yellowcard)

Adverse events should also be reported to: [qa@xealpharma.co.uk](mailto:qa@xealpharma.co.uk)